

# Peptid Rezeptor Radiotherapie (PRRT) – $^{177}\text{Lu}$ DOTATATE

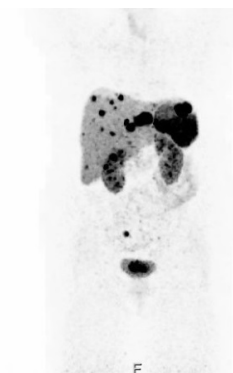
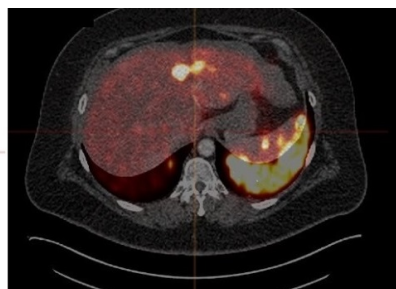
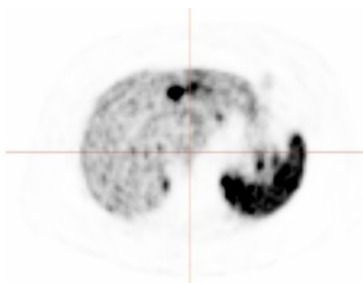
## Pankreatischer NET – Therapieansprechen

axiales PET

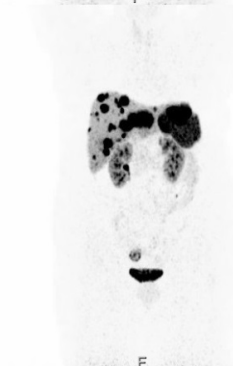
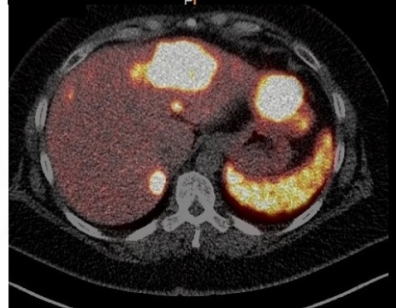
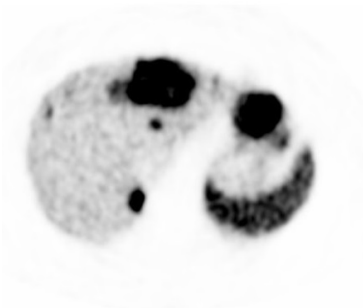
axiales PET/CT

coronales MIP PET

vor  
Chemotherapie



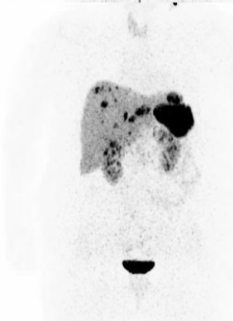
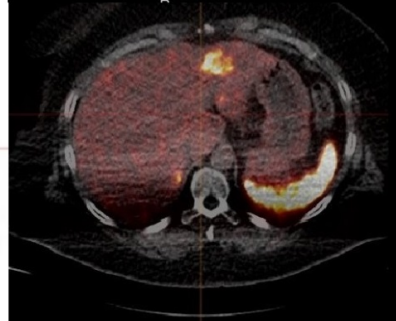
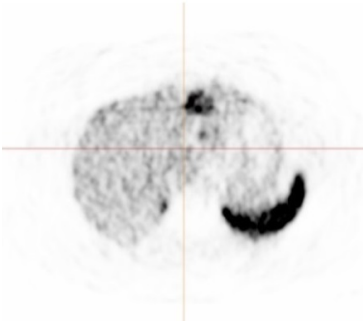
nach  
Chemotherapie /  
vor PRRT



6 Monate  
Etoposid / cis-platin



nach PRRT



6 Zyklen  
 $^{177}\text{Lu}$ -DOTATATE